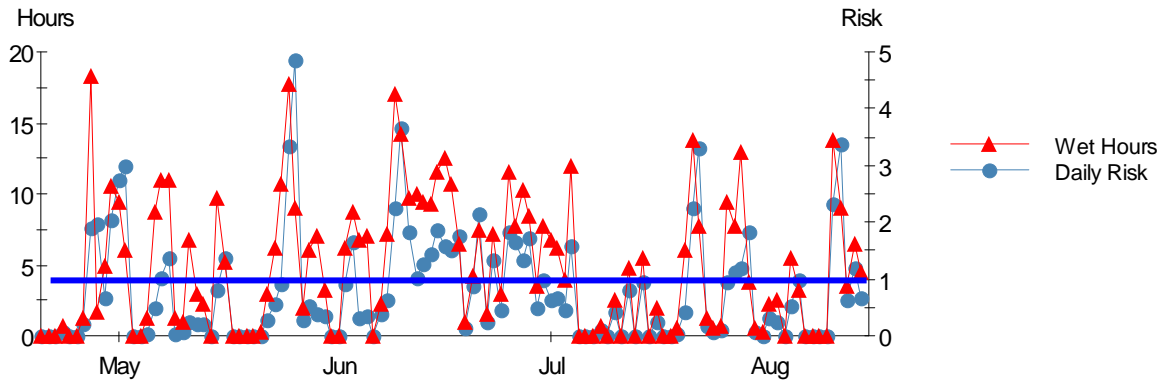
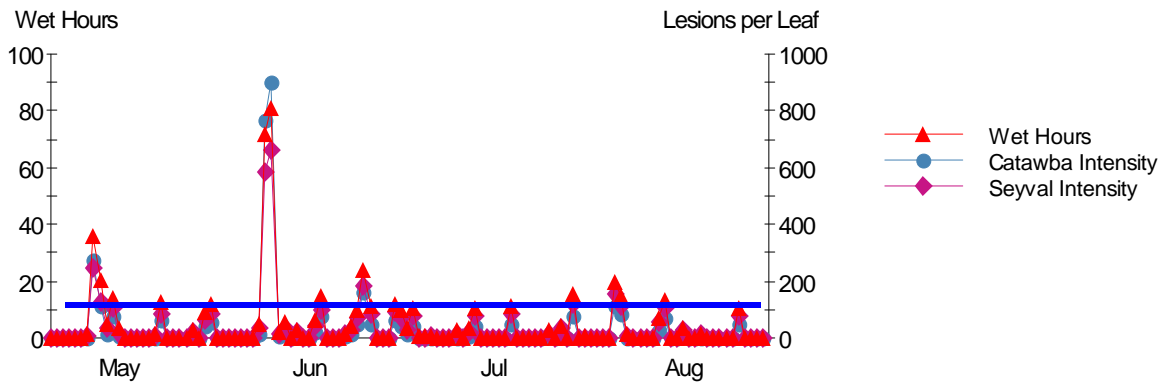


Rocheport, MO 2009 - Black Rot - Grape



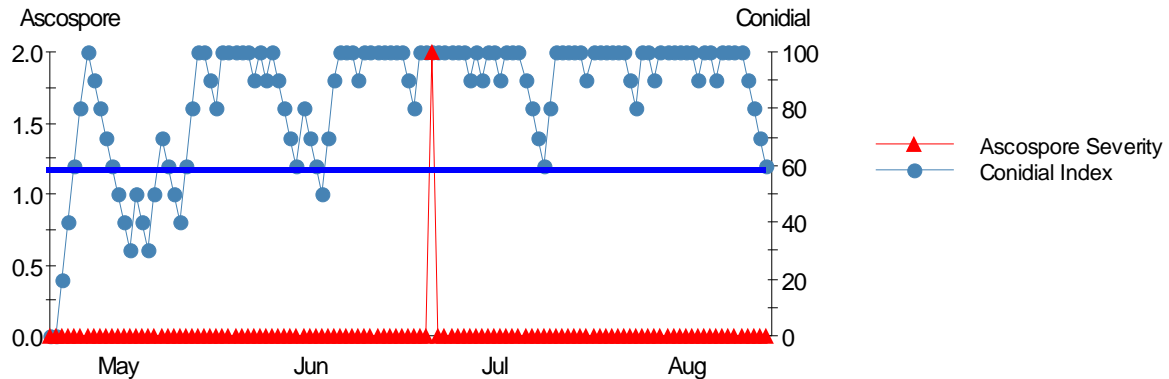
Risk for fruit is just prior to bloom to about six weeks following bloom
 Black rot infection occurs at a daily risk > 1 (blue dots above blue line)
 Hours of leaf wetness and temperature determine potential infection periods
 Risk of foliar or shoot infection begins shortly after budburst

Rocheport, MO 2009 - Phomopsis Cane+Leaf Spot - Grape



Greatest risk for infection start at 1-2 inch shoot length and lasts until around fruit set.
 Lesion per leaf (1-30 = light, 31-90 = moderate, 90+ = as indicated by blue or purple symbols above blue line) signifies severity of disease infection following adequate amounts of rainfall to disperse spores. The greater the amount of leaf wetness the higher the chance for increased severity of infection

Rocheport, MO 2009 - Powdery Mildew - Grape

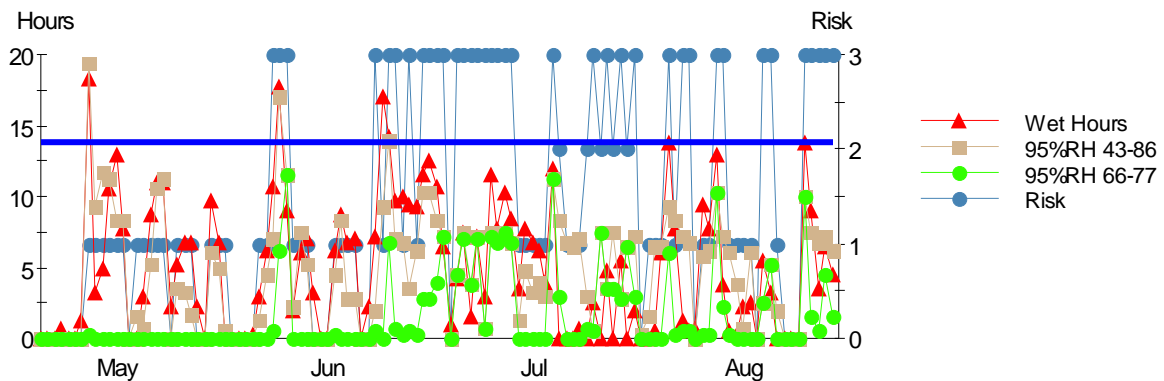


Most important sprays - a week or 2 before bloom to about 1 month after bloom.

Blue dots for Conidial index > 60 (**blue line**) signifies a potential Powdery Mildew infection period. **Red symbols** indicate Severe Ascospore severity if > 2. Ascospores cause the primary infection while the conidial spores resulting from the ascospores are a secondary infection. Air temperature and leaf wetness are essential for this mode, rainfall is actually damaging to powdery mildew.

Powdery model is reset following a spray application to more accurately determine start of the next infection period when Conidial Index (**blue dots**) exceed 60 (**blue line**) which occurred as early as 24 Apr. Continue to reset the model every time following a spray application.

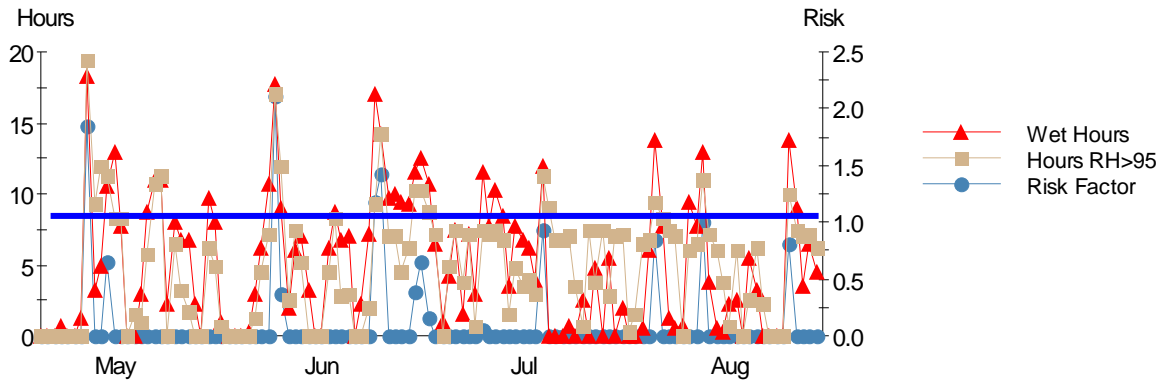
Rocheport, MO 2009 - Downy Mildew - Grape



Fruit most susceptible from 2 weeks prior to bloom to 4 weeks following.

Risk level > 2 (**blue line**) indicated by **blue dots** signifies a potential Downy Mildew infection period. Potential infection risk is determined by hours of leaf wetness, relative humidity, and temperature. Moderate temperatures combined with high humidity are favorable conditions for spread of infection.

Rocheport, MO 2009 - Botrytis - Grape



Spray about bloom, closing, veraison and preharvest to protect fruit.

If conditions aren't favorable then you could probably safely omit the spray.

There was potential for Botrytis infection on 27, Apr, 25 May, 9-10 June and 28 July when it was cool enough ($< 85^{\circ}\text{F}$) and $> 95\%$ RH humid for > 12 hrs as noted by the **blue dot** exceeded Risk > 1 (**blue line**)