

Grape Phylloxera by Donn T. Johnson, University of Arkansas on 4 May 2006

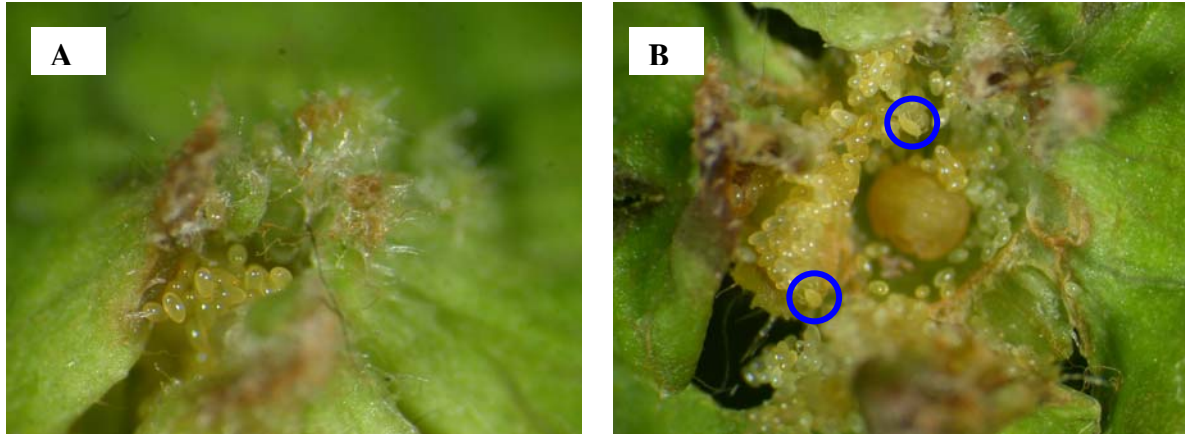


Figure 1. Grape Phylloxera (A) gall opening on top of leaf showing eggs and (B) adult female stem mother, eggs and legged crawlers (circled)

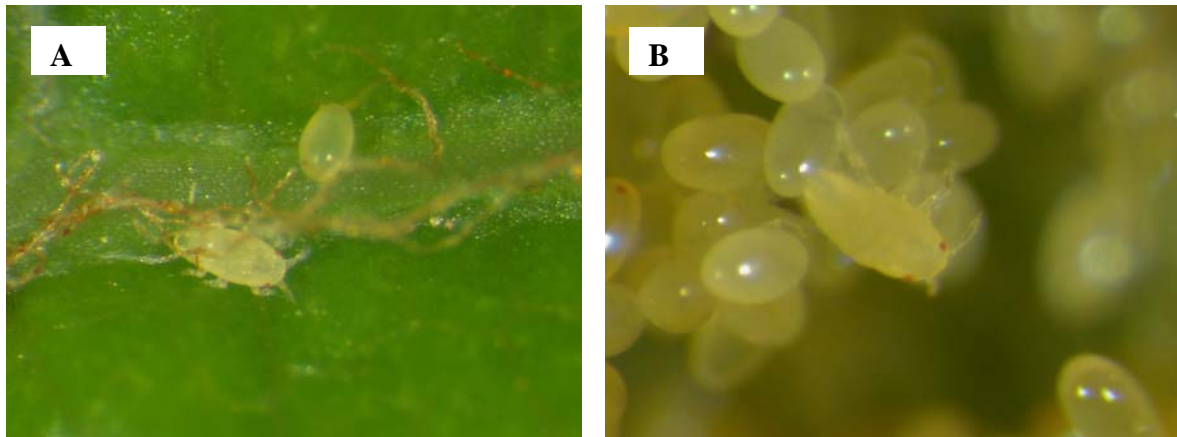


Figure 2. Grape Phylloxera (A) crawler and egg with eye spots and (B) close up of crawler and eggs

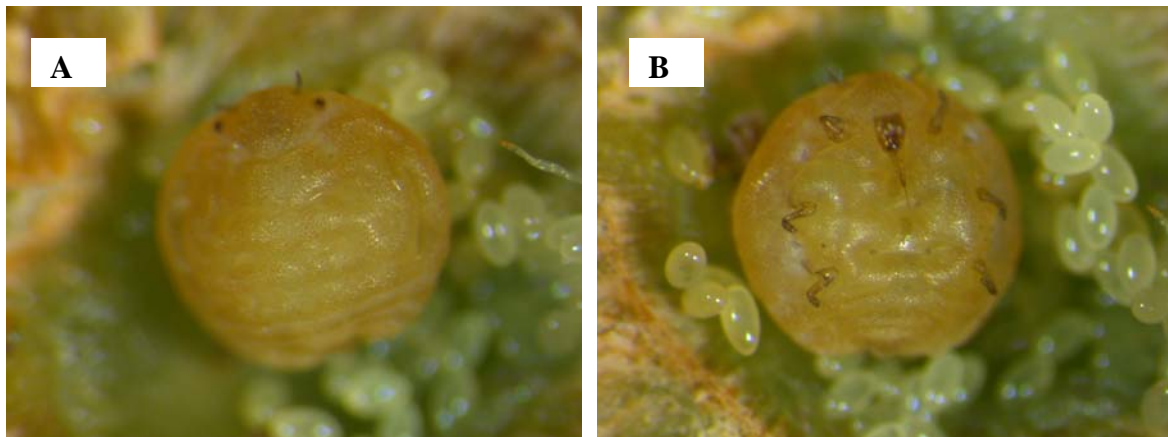


Figure 3. Grape phylloxera adult female (A) dorsal view showing 2 eye spots and antennae and (B) ventral side showing 6 legs and mouthpart (proboscis)