

**Grape Phylloxera**  
(Donn T. Johnson and Sandra Sleezer, University of Arkansas-Fayetteville)



Figure 1. Grape Phylloxera (A) gall opening on top of leaf showing eggs and (B) adult female stem mother, eggs and legged crawlers (circled)

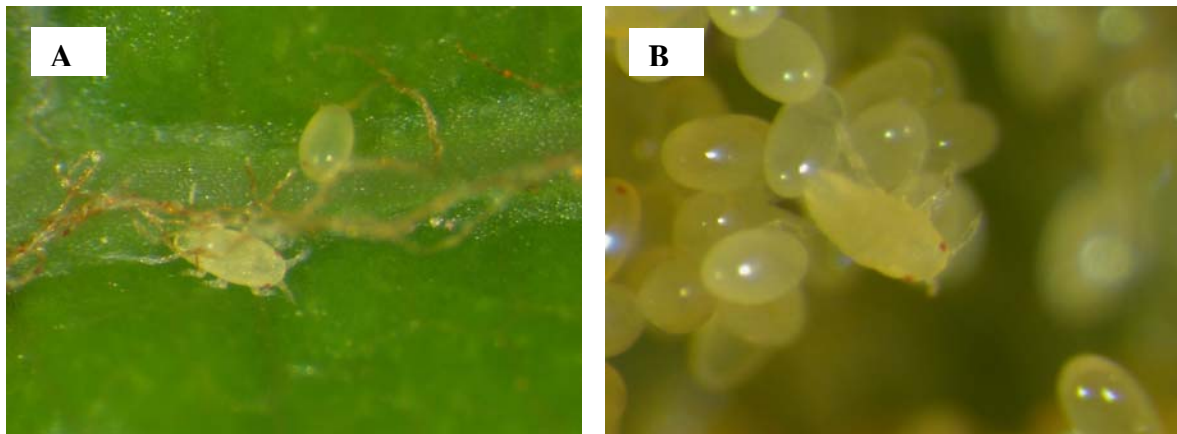


Figure 2. Grape Phylloxera (A) crawler and egg with eye spots and (B) crawler and eggs

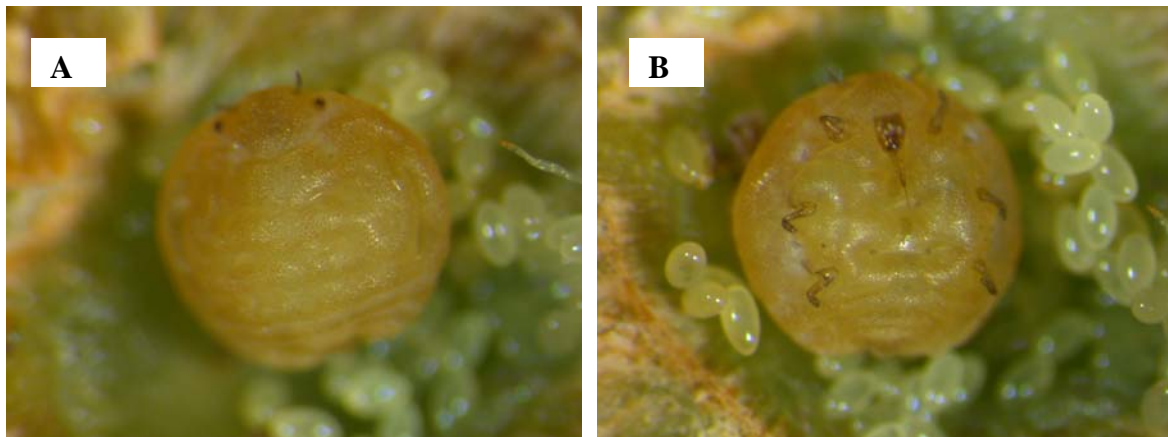


Figure 3. Grape phylloxera adult female (A) dorsal view showing 2 eye spots and antennae and (B) ventral side showing 6 legs and mouthpart (proboscis)

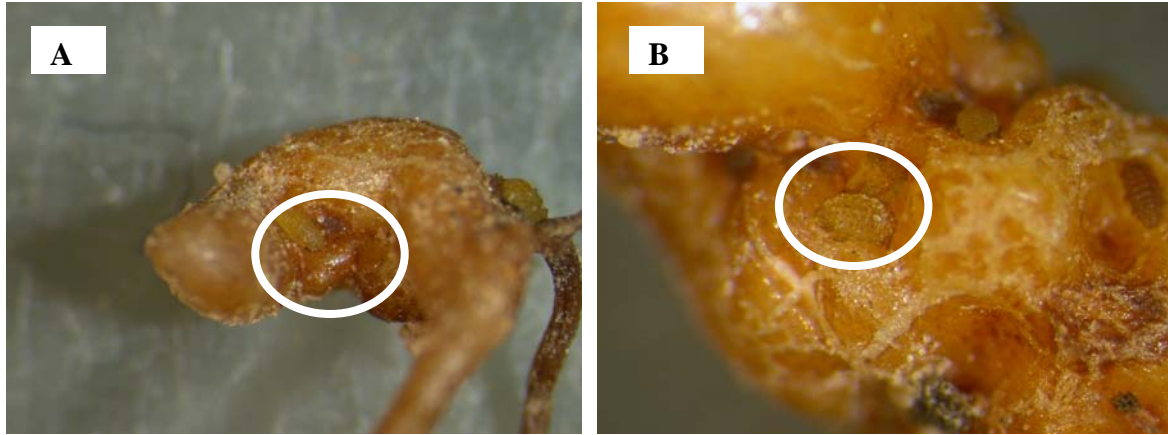


Figure 4. (A) Grape phylloxera crawler on nodosity on feeder root on susceptible cultivar and (B) close up of crawler on nodosity (September 2006)



Figure 5. Root architecture of (A) grape phylloxera susceptible 'Vignole' with many nodosities, (B) close up of nodosities in Purdy, MO (no nodosities were on phylloxera resistant rootstock '3309C') (September 2006)