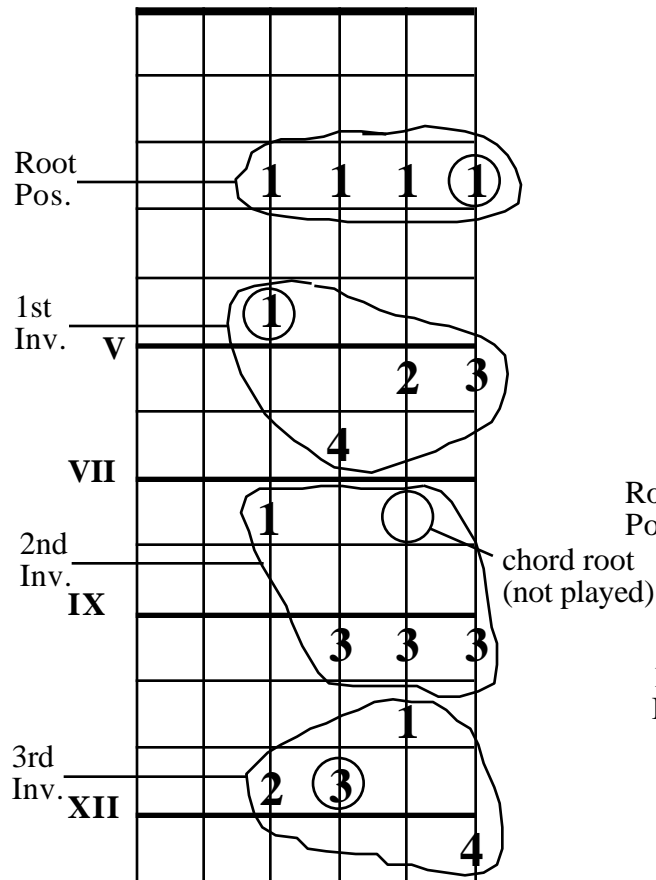
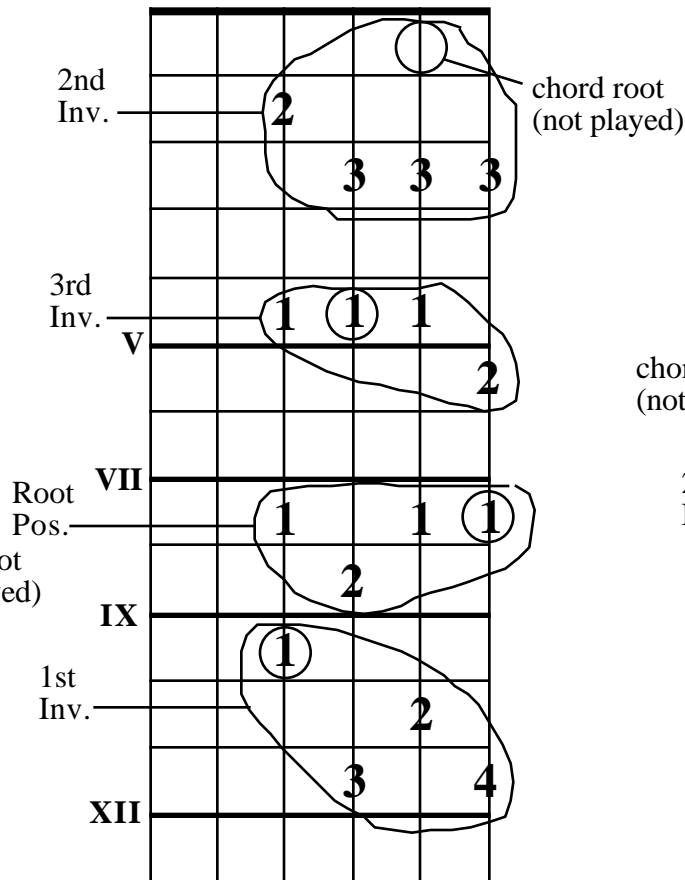


# Comping Chord Voicings

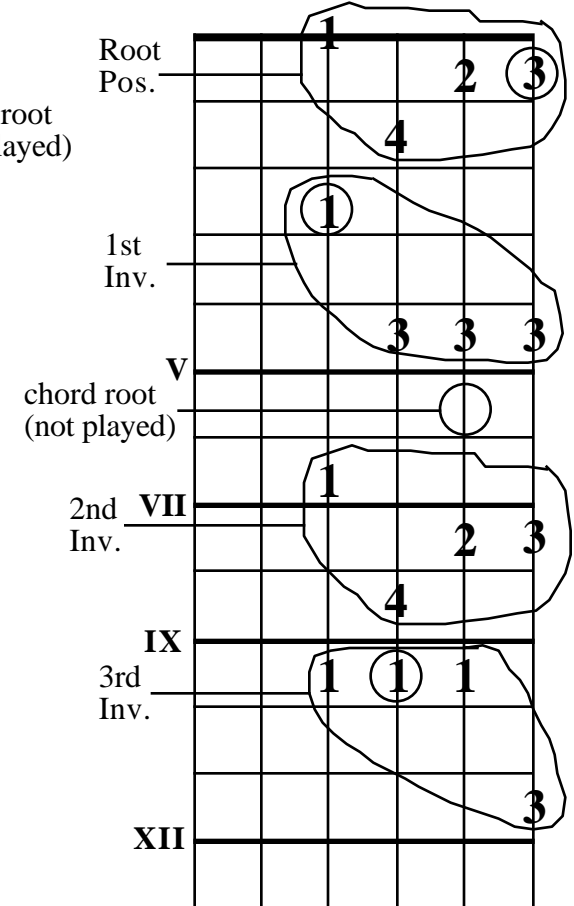
Minor 7th Chord  
Inversions  
(ii7) (Gm7)



Dominant 7th Chord  
Inversions  
(V7) (C7)



Major 7th Chord  
Inversions  
(I7) (FMa7)



The inversion labels for these chords are obtained by reading from the note on the top string, not the lowest pitch. Although this isn't the usual way reckon inversions, it is more useful for comping chords, since you will often want to harmonize a melody with the melody not on top, not the bottom. Circles around a number indicate the root of the chord. The second inversion of the FMa7 has no root, it is actually an FMa9 chord.